

Literacy

In Literacy, we will be focusing on learning all about Marie Curie – who she was, what she did and the legacy that she left behind. We will be using our learning to influence the writing of a creative recount about her as well as writing a persuasive letter to the Royal Society for Marie Curie to present her findings.

Maths

In Maths, we will be focusing on a variety of aspects: shape, translation and reflection and how to read timetables and answer questions about these timetables (buses, trains and school timetables). We will also be looking at different elements of geometry including angles, area, perimeter and volume. As always, please continue to encourage your children to practice their times table to support their maths learning.

Art and Music

We will be looking at portrait sketching in art and will be using these skills to sketch a portrait of Marie Curie – linking with our literacy. In terms of music, we will be focusing on composing our own music to fit in with our song choices and will be learning some musical notes.

Outbreak

History

This term we will be looking at the industrial revolution and the incredible inventions that were created during this time. We will also be considering the role that children played during the revolution in terms of work and will be using our learning to influence writing a diary entry from this perspective.

PE

This term we will be focusing on Cricket. Children will learn the rules and skills surrounding batting, bowling and fielding before taking part in numerous team games.

Science

We will be continuing our focus on 'Animals including humans' and 'Living things and their habitats', where we will look at animal classifications as well planting our own tomatoes and witnessing the plant life cycles!

PSHE

In PSHE, we will be continuing with using jigsaw. However, we will be having more of a focus on E-safety. This will be useful for the children to understand the E-safety rules.

Geography

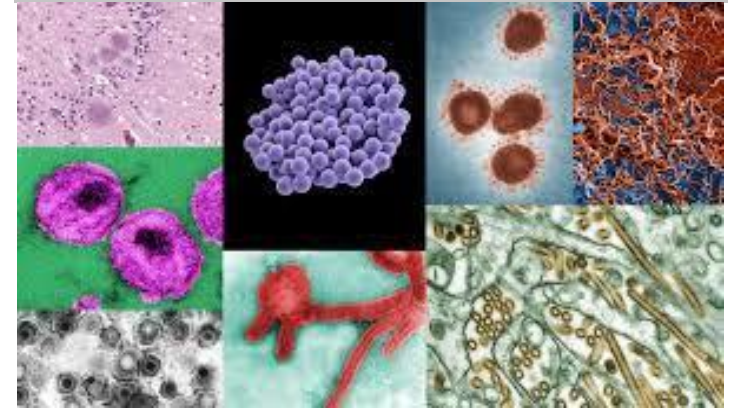
We will be continuing to use maps work skills, looking at the different countries that have been affected by epidemics, pandemics and/or both, we will then move on to where in the world medicines have been created, researched and developed. We will also be discovering the meaning of latitude and longitude.

Y5 Summer 1

Important dates for your diary:

- Monday 1st May – Bank holiday
- Monday 8th May – Bank holiday
- Friday 26th May – End of term.

Newsletter



Spellings

Spelling techniques are taught within lessons. Children will be sent home with a list of words on a Monday. There will then be a dictation test on the Friday. Please encourage your child to practice their spellings each week!

PE

Class 11's PE will be on a **Friday afternoon.**

Class 12's PE will be on a **Friday afternoon.**

Appropriate kits are expected to be in school on these days as both are important and enjoyable parts of the curriculum